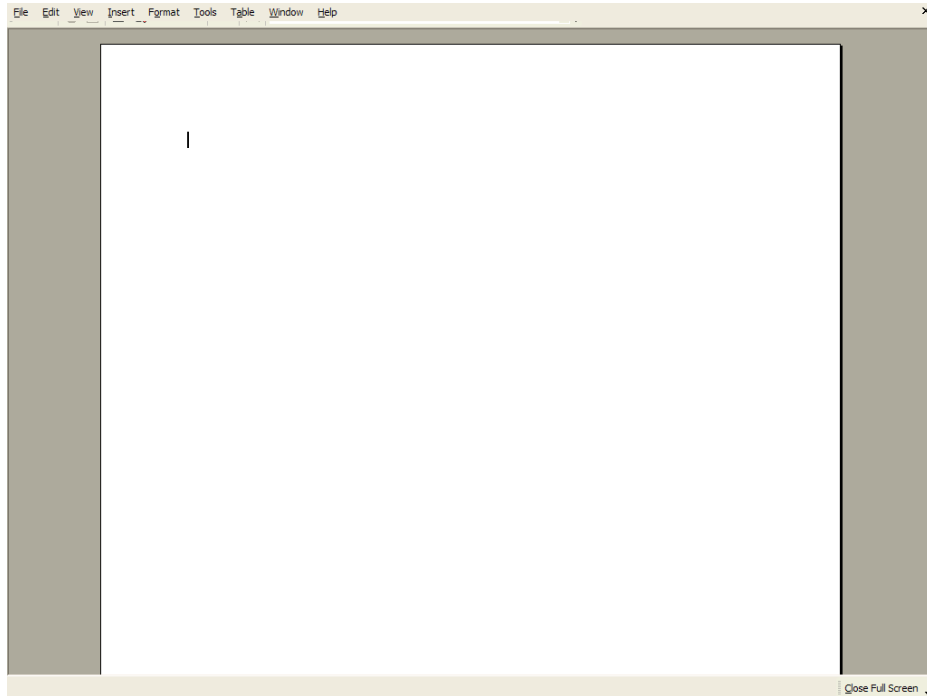
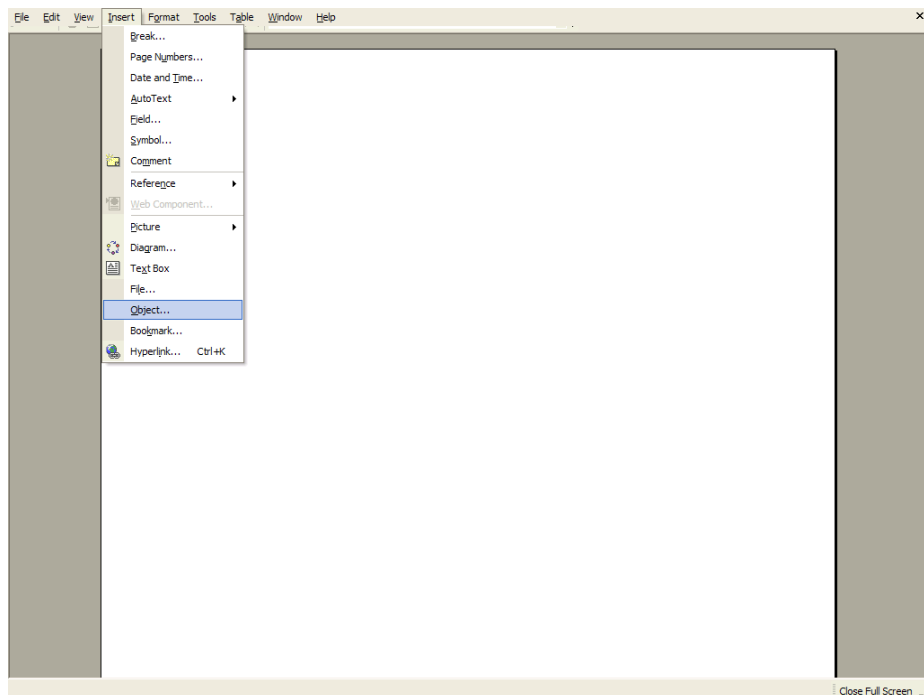


MS Equation Editor Instructions

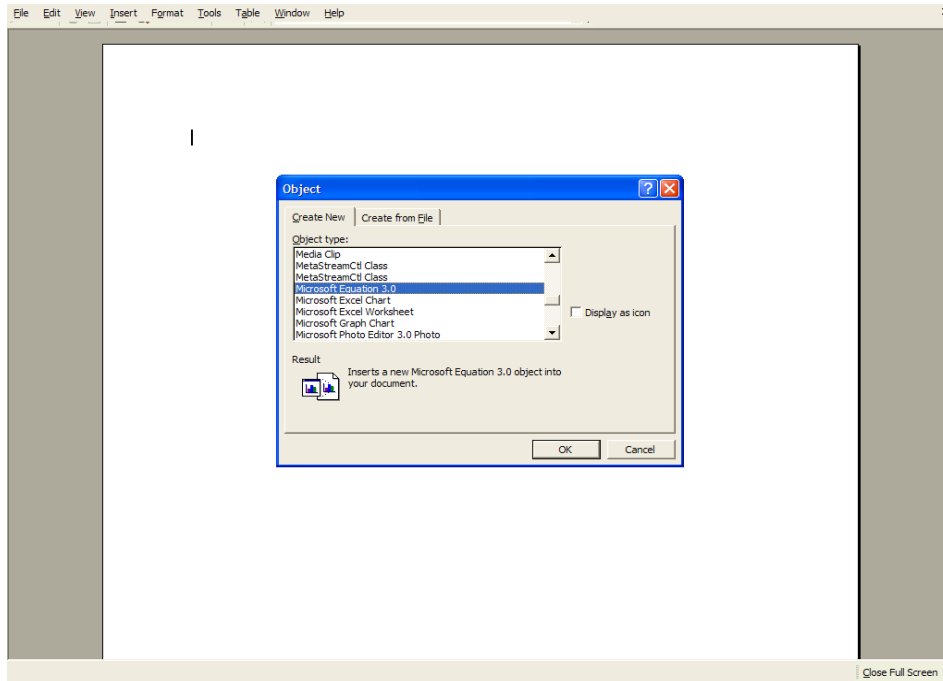
1. Start off by opening up MS Word. A "full screen" view will be used to illustrate these steps.



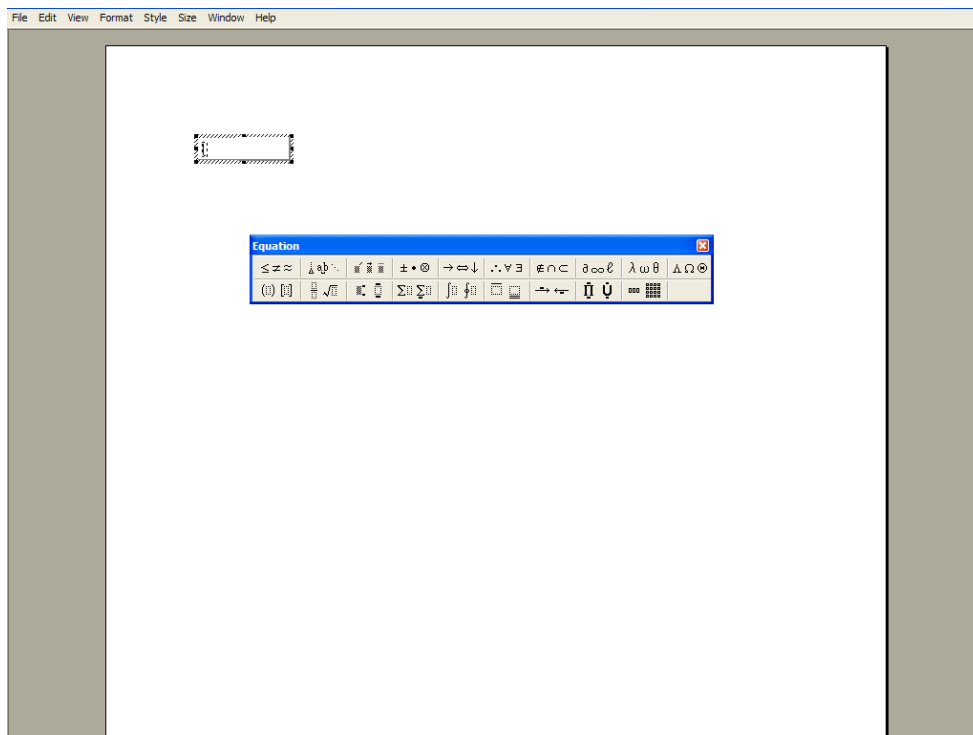
2. Go to the INSERT option at the top of the screen, click on it, and then go down to OBJECT.



3. Click on Object and then "scroll down to" MICROSOFT EQUATION. Note: If this does not show up, then this option may need to be installed using the original installation disc as an "Add-In." Using Help, there are detailed instructions on how to do this.



4. Click OK and what should appear is a box containing all of the math symbols that could be used across any homework assignment that might be encountered in either math or science.



HAVE FUN!